



LEMAN STREET, LONDON, E1

£1,750 PER CALENDAR

* ALL BILLS INCLUDED INCLUDING COUNCIL TAX! * Nestled in the vibrant heart of London, this charming apartment on Leman Street offers a perfect blend of comfort and convenience. With an open plan kitchen reception room, one bedroom and bathroom, this flat provides a tranquil retreat from the bustling city life.

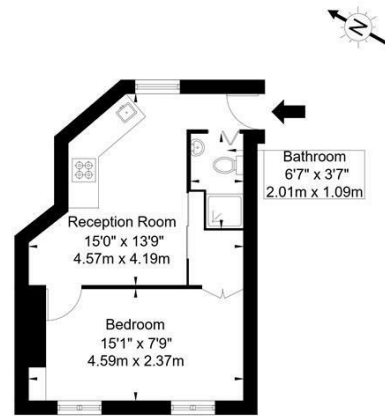
Leman Street is well-connected, making it easy to explore all that London has to offer, from its rich history to its contemporary attractions. Whether you are looking to enjoy the local cafes, shops, or cultural landmarks, this location places you right in the midst of it all.



Goldman Greg

Leman Street, E1 8EY

Approx Gross Internal Area = 27.5 sq m / 296 sq ft



Ref:

Copyright
**BLEU
PLAN**

The Floor plan is not to scale and measurements and areas shown are approximate and therefore should be used for illustrative purposes only. The plan has been prepared in accordance with the RICS code of Measuring Practice and whilst we have confidence in the information produced it must not be relied on. If there is any aspect of particular importance, you should carry out or commission your own inspection of the property.
Copyright @ BLEUPLAN



Energy Efficiency Rating		
	Current	Potential
Very energy efficient - lower running costs		
(92 plus) A		
(81-91) B		
(69-80) C		
(55-68) D	58	
(39-54) E		
(21-38) F		
(1-20) G		
Not energy efficient - higher running costs		
England & Wales		
	EU Directive 2002/91/EC	

Agents Note: Whilst every care has been taken to prepare these particulars, they are for guidance purposes only. All measurements are approximate and are for general guidance purposes only and whilst every care has been taken to ensure their accuracy, they should not be relied upon and potential buyers/tenants are advised to recheck the measurements

Goldman Greg
143 Leman Street
London
E1 8EY

02079770018
leads@goldmangreg.co.uk
www.goldmangreg.co.uk

